

Annexin V-FITC



天津三箭生物技术股份有限公司
Tianjin Sungene Biotech Co., Ltd.
精准 高效 稳定 Precision Efficient Stable

Catalog Number	Vial Size
AO2001-02G	25 tests
AO2001-02H	100 tests

Market | 400-621-0003
marketing@sungenebiotech.com

Support | 022-66211636-8024
techsupport@sungenebiotech.com

Web | www.sungenebiotech.com

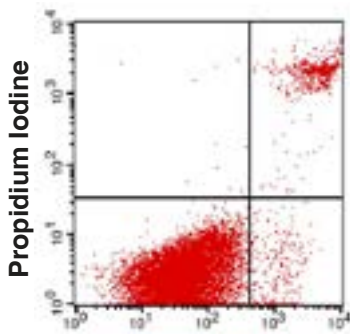
Important Note: Each Buffer should be diluted by using the same pH PBS as mentioned below.
This product is guaranteed up to one year from purchase.

Description

Annexin V (or Annexin A5) is a member of the annexin family of intracellular proteins that binds to phosphatidylserine (PS) in a calcium-dependent manner. PS is normally only found on the intracellular leaflet of the plasma membrane in healthy cells, but during early apoptosis, membrane asymmetry is lost and PS translocates to the external leaflet. Fluorochrome-labeled Annexin V can then be used to specifically target and identify apoptotic cells.

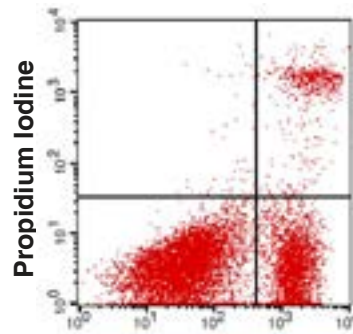
Annexin V Binding Buffer is recommended for use with Annexin V staining.

Illustration of Immunofluorescent Staining



Annexin V-FITC

Jurkat Cell stained with Annexin V-FITC and PI



Annexin V-FITC

Camptothecin treated Jurkat Cell stained with Annexin V-FITC and PI

Suggested Staining Protocol

1. Dilute 3 mL 10× binding buffer with 27 mL distilled water for 10 tests.
2. Harvest cell (about 1×10^6 cells per test) then wash with cold PBS.
3. Suspend cells in 1 mL 1× Binding Buffer, 300×g centrifugation for 10 minutes, then remove the Binding Buffer from the cell pellet.
4. Resuspend cells in 1 mL 1× Binding Buffer, adjust cell concentration to 1×10^6 cells/mL.
5. Add 100 μ L of cells (1×10^5 cells) to each labeled tube.
6. Add 5 μ L of Annexin V-FITC to appropriate tubes.
7. Gently vortex each tube and incubate for 10 minutes in room temperature, protected from light.
8. Add 5 μ L PI or 7-AAD solution incubation for 5min in room temperature, protected from light.
9. Add PBS to 500 μ L and vortex gently.
10. Analyze by flow cytometry in 1 hour.

Product Information

Conjugation: FITC

Formulation: PBS pH 7.2, 0.09% NaN₃

Storage: Keep as concentrated solution. Store at 4°C and protected from prolonged exposure to light. **Do not freeze.**

Application: Recommended Application: FC
Other Applications (For the relevant formats):
Immunohistochemistry

Usage: Each lot of this reagent is quality control tested by immunofluorescent staining with flow cytometric analysis (The amount of the reagent is suggested to be used 5 μ L/10⁵ cells). Since applications vary, the appropriate dilutions must be determined for individual use.

References

- [1] Fadok, V.A. et al. 1992. J. Immunol. 148:2207.
- [2] Tait, J.F., et al. 1989. J. Biol. Chem. 264:7944.
- [3] Andree, H.A., et al. 1990. J. Biol. Chem. 265:4923.
- [4] Tiagarajan, P., et al. 1990. J. Biol. Chem. 265:17420.
- [5] Dachary, P.J., et al. 1993. Blood 81:2554.
- [6] Koopman, G., et al. 1994. Blood 84:1415.
- [7] Martin, S.J., et al. 1995. J. Exp. Med. 182:1545.
- [8] Wood, B.L., et al. 1996. Blood 88:1873.

For Research Use Only.